

WPA PROJECT # 60 - INFO SHEET

RATTLESNAKE STOMP

WHEN : Sunday, 14 September – Tuesday, 16 September

WHERE: Desert Canyon Golf Resort, Orondo, WA

(see attached sheet for course details and directions)

ACCOMMODATIONS: THE LODGE AT THE RESORT HAS SINGLE, DOUBLE, AND FOUR-PLEX UNITS.

(see attached sheets for details)

Unit pricing: (per couple per night)

Penthouse \$180

Small room \$118

Large room \$126

2 bedroom casita \$112.50

4 bedroom casita \$69.75

GOLF: Sunday 18 hole putting competition, 4 person scramble, 4:30-6:00 PM- \$5 per person, includes one Desert Canyon logo ball (yes, a real logo ball!)

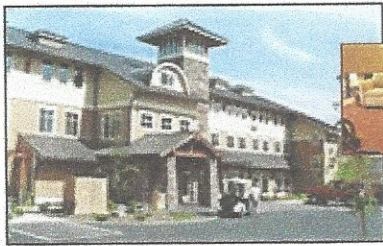
Monday 18 holes- T times starting @ 9AM- \$49 per person, includes cart and range balls

Tuesday 9 hole getaway scramble- T times starting @ 8:30Am- \$35 per person, includes cart and range balls

DINING: Sunday- Dinner at Golf Course- choice of prime rib or salmon-\$27 per person, incl. tax and gratuity. Please make your choices on the registration sheet.

Monday- Dinner is a Buffet at Golf Course-Chicken, Ribs, Baked Beans, Potato Salad, Corn Muffins, Dessert-\$23 per person, incl. tax and gratuity. No choices need here.

ROBINS



Home



Accommodations



Golf



Restaurant



[Contact](#)



Real Estate

Onsite Accommodations allow you to enjoy the desert in spring, summer, fall and winter! The Lodge at Desert Canyon offers luxury suites with living rooms, spacious bedrooms, and full kitchens completely supplied with all you need to make the lodge your home for a night or an extended stay. All accommodations are beautifully furnished with the finest amenities including a television in the living room and bedroom of every suite. Come relax in the peace and quiet of the desert. One, two and four bedroom units are available.

Broadband internet access available.

• Please **EMAIL** or phone (509)784-1234 for Lodging and Events



Small One Bedroom Lodge

Bathrooms: 1
 Kitchen: Full
 Total Beds: 1 Queen/1 Queen Sofa
 Occupancy: 4
 Amenities: Fireplace, TV, View, Deck/Patio, Washer/Dryer

➔ [see floor plan](#)



Two Bedroom Casita

Bathrooms: 2
 Kitchen: Full
 Total Beds: 2 Queens/1 Queen Sofa
 Occupancy: 6
 Amenities: Fireplace, TV, View, Large Deck, BBQ, Washer/Dryer

➔ [see floor plan](#)



Large One Bedroom Lodge

Bathrooms: 1
 Kitchen: Full
 Total Beds: 1 King or 2 Twins/
 1 Queen Sofa
 Occupancy: 4
 Amenities: Fireplace, TV, View, Jacuzzi Tub, Deck/Patio, Washer/Dryer

➔ [see floor plan](#)



Four Bedroom Casita

Bathrooms: 2
 Kitchen: Full
 Total Beds: 4 Queens/1 Queen Sofa
 Occupancy: 10
 Amenities: Fireplace, TV, View, Large Deck, BBQ, Washer/Dryer

➔ [see floor plan](#)

Copyright 2012 © GLIG, LLC. All rights reserved.



The image block for the Four Bedroom Casita contains two interior photographs on the left and a floor plan on the right. The top photo shows a dining area with a table and chairs. The bottom photo shows a bedroom with a bed and nightstands. The floor plan shows a layout with four bedrooms, a living area, a kitchen, and a bathroom.

Four Bedroom Casita

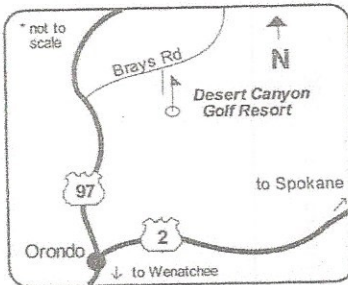


The image block for the Two Bedroom Casita contains two interior photographs on the left and a floor plan on the right. The top photo shows a dining area with a table and chairs. The bottom photo shows a bedroom with a bed and nightstands. The floor plan shows a layout with two bedrooms, a living area, a kitchen, and a bathroom.

Two Bedroom Casita

Desert Canyon Golf Resort (public, 18 hole course)
 1201 Desert Canyon Boulevard, Orondo, WA 98843
 Phone: (509) 784-1111 or 1-800-258-4173. Website: www.desertcanyon.com
 Course architect/year: Jack Freil/1993. Course record: 65.

Green fees: \$40 to \$92 depending on season, age or time of day, VISA, M/C.
Power cart: included in green fee. **Pull cart:** none. **Trail fee:** not allowed.
Reservation policy: 60 days with payment by credit card. **Online tee-times:** yes.
Signature hole: 6th, 690 yard par 5. **Playability:** demanding tee to green.
Winter condition: closed. **Greens:** large, undulating. **Fairways:** mounds, slopes.
Terrain: flat to steep rolling hills. **Tees:** grass tees. **Spikes:** soft spikes required.
Services: pro shop, club rentals, lessons, restaurant, snack bar, lounge, beer, wine, liquor, beverage cart (in season), driving range, putting green. **Dress code:** yes.
Comments: this is a desert links style course that has spectacular views of the Columbia River and the surrounding countryside. Demanding golf course that features desert landscape, large undulating greens, bunkers, desert waste areas and water hazards. The facility has been ranked #2 in the state of Washington by *Golf Digest*. It was also ranked #35 in Americas top 75 upscale golf courses to play.

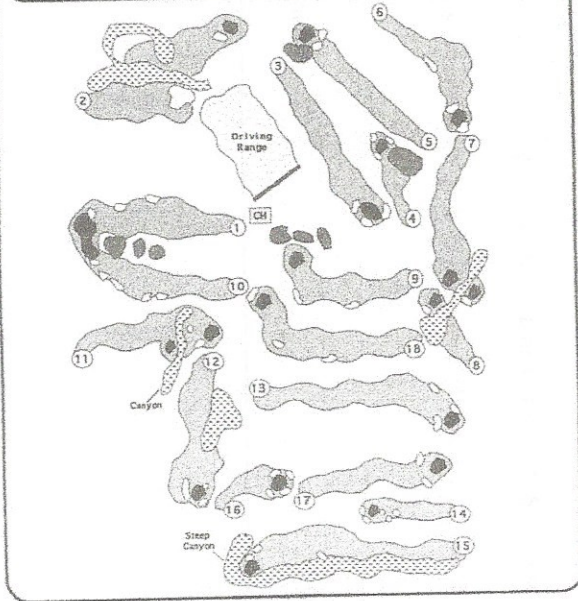


State Location: North central region
Drive Time (Seattle): 190 minutes
Map & Grid Number: Map 3, Grid C2



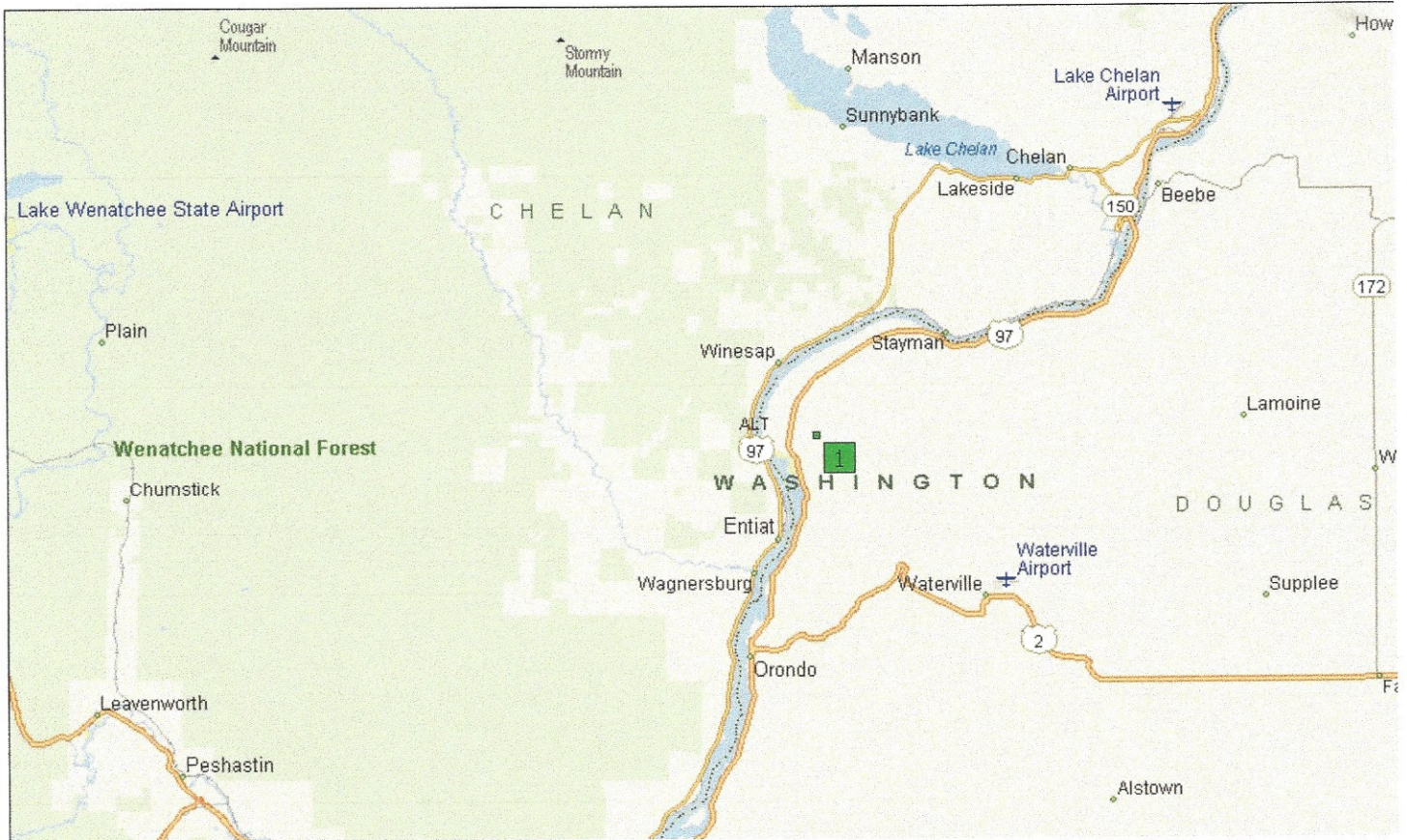
Directions: the course is located on the east side of the Columbia River off of Hwy 97 (not Alt. Hwy 97 on the westside), 6.5 miles north of Orondo. From Hwy 97 turn eastbound on Brays Road. Go 3/4 of a mile to the entrance. Signs are posted at the turn to the resort.

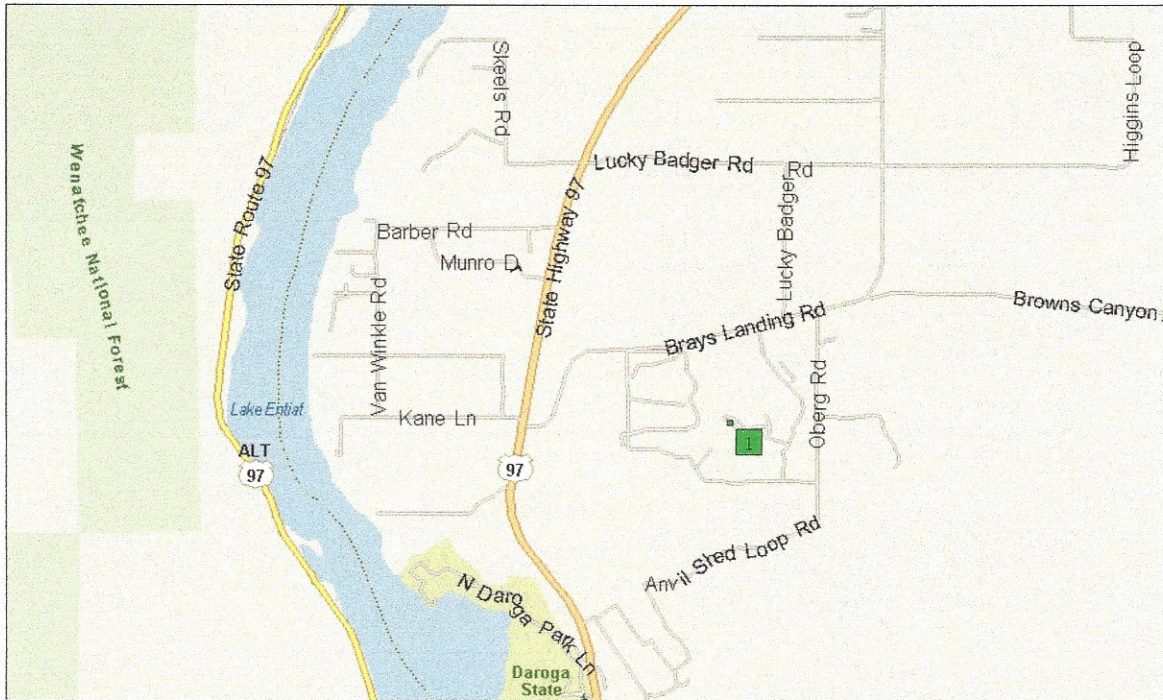
Rating/Slope: C 73.2/135, M 70.1/127, W 70.2/123



HOLE	C	M	W	PAR
1	379	368	339	4
2	397	368	311	4
3	489	434	386	5
4	133	108	93	3
5	471	410	350	4
6	352	308	267	4
7	535	519	396	5
8	171	133	105	3
9	394	334	261	4
OUT	3321	2982	2598	36
10	515	491	463	5
11	327	255	230	4
12	422	373	312	4
13	417	402	332	4
14	189	170	108	3
15	668	632	580	5
16	126	115	96	3
17	352	322	270	4
18	429	402	355	4
IN	3445	3162	2746	36
TOTAL	6766	6144	5254	72

Desert Canyon Golf Resort 1201 Desert Canyon Blvd. Orondo WA 98843 509.784.1111





From Leavenworth to Desert Canyon Golf Resort

Summary: 42.4 miles (48 minutes)

Time	Mile	Instruction	For	Toward
9:00 AM	0.0	Depart Leavenworth on US-2 [Stevens Pass Greenway] (East)	18.9 mi	
9:20 AM	18.9	Keep RIGHT onto Ramp	0.4 mi	US-97 N / US-2 E / Spokane / Okanogan
9:21 AM	19.3	Bear RIGHT (East) onto US-2 [US-97]	1.8 mi	
9:23 AM	21.1	Turn LEFT to stay on US-2 [US-97]	11.9 mi	
9:35 AM	33.0	Keep LEFT onto US-97 [State Highway 97]	164 yds	
9:35 AM	33.1	Road name changes to US-2 [US-97]	0.3 mi	
9:35 AM	33.3	Keep STRAIGHT onto US-97 [State Highway 97]	7.1 mi	
9:43 AM	40.5	Turn RIGHT (East) onto Brays Landing Rd [Brays Rd NW]	0.6 mi	
9:44 AM	41.1	Keep STRAIGHT onto Brays Landing Rd [Brays Rd]	0.5 mi	
9:45 AM	41.6	Turn RIGHT (South) onto Desert Canyon Blvd	0.6 mi	
9:47 AM	42.1	Turn RIGHT to stay on Desert Canyon Blvd	0.3 mi	
9:48 AM	42.4	Arrive 1201 Desert Canyon Blvd, Orondo, WA 98843		

From Winthrop to Desert Canyon Golf Resort

Summary: 76.3 miles (1 hour, 22 minutes)

Time	Mile	Instruction	For	Toward
9:00 AM	0.0	Depart Winthrop on WA-20 [North Cascades Hwy] (South-West)	10.7 mi	
9:13 AM	10.7	Keep STRAIGHT onto WA-153 [State Route 153]	30.7 mi	
9:44 AM	41.4	Turn RIGHT (South) onto US-97 [US Highway 97]	32.9 mi	
10:17 AM	74.3	Turn LEFT (East) onto Brays Landing Rd [Brays Rd NW]	0.6 mi	
10:18 AM	74.9	Keep STRAIGHT onto Brays Landing Rd [Brays Rd]	0.5 mi	
10:19 AM	75.5	Turn RIGHT (South) onto Desert Canyon Blvd	0.6 mi	
10:21 AM	76.0	Turn RIGHT to stay on Desert Canyon Blvd	0.3 mi	
10:22 AM	76.3	Arrive 1201 Desert Canyon Blvd, Orondo, WA 98843		

WPA PROJECT # 60 - SIGNUP SHEET

RATTLESNAKE STOMP

All attendees need to make their own lodging arrangements and payments directly with the Lodge at Desert Canyon, tel. 1 (509) 784 1234.

Please pay for Monday and Tuesday golf rounds when you check in to play.

We ask that you prepay to Ted and Ena for the Sunday putting scramble. This should be a fun event, with everyone attending invited to play. Even if you are attending only for the socializing (and wonderful company), bring your putters and join in the fun.

We are also asking for prepayment to us for the Sunday night and Monday night dinners. You are asked to make your meat choice for Monday below. Tuesday is a buffet, so no choice is required now.

All accommodations have kitchenettes, should you wish to make your breakfasts there. In addition, the golf shop coffee bar will be open with a limited menu such as breakfast sandwiches, etc. in the morning, and the restaurant will be open for lunches.

Sunday meal choice (\$27 per person) - Prime Rib _____ Salmon _____

Monday meal is a buffet so no choice is necessary (\$23.00 per person)

Golf- Sunday 18 hole putting scramble (\$5 per person)

Player 1 _____ Player 2 _____

Golf - Monday (\$49 per person, carts/range ball incl.) (Pay at the Golf Course on the day we play)

Player 1 _____ Player 2 _____

Golf- Tuesday (\$35 per person, carts/range balls incl.) (Pay at the Golf Course on the day we play)

Player 1 _____ Player 2 _____

Note: Tuesday cost is less than quoted to the group previously.

Please send completed signup sheets and checks to

Ted and Ena Robins
11606 60th PI W
Mukilteo, WA 98275

Note- Deadline for signups is August 15, 2014, although we encourage everyone to book accommodations and signup as soon as possible.

Any questions, please call Ted or Ena @ 425 349 1415, or email us at tedandena@comcast.net