

WPA PROJECT # 23

September 8, 9, 10, 1996

Project Managers: Joyce & Jack Green

Lodging: Stewart Lodge, Cle Elum (brochure and map enclosed)
1 bed, 2 persons...\$50 plus \$3.85 tax
Please make your reservation by July 15.
Phone # 509-674-4548
Be sure to tell them you are with the WPA golf group.

RV's: Spaces with complete hook-ups are available at the golf course. Dry camp space by Green's cabin.

Sunday, Sept. 8:

Social hour and meeting 4p.m.-5:45 (Green's cabin)
Dinner 6p.m. at Mama Vellone's (order off menu)

Monday, Sept. 9:

Golf: Sun Country Golf Course
18 holes \$12; 9 holes \$8
Carts \$18 (2 persons)

Tuesday, Sept. 10:

We can arrange for a scramble if anyone is interested.

Please return this section to Jack or Joyce now or send to them by August 1.

Please mark how many for:

9 holes

18 holes

cart

Interested in playing scramble on Tues.

Name/s _____



◆ ◆ ◆ Rating

A Motel of Quality
with competitive prices



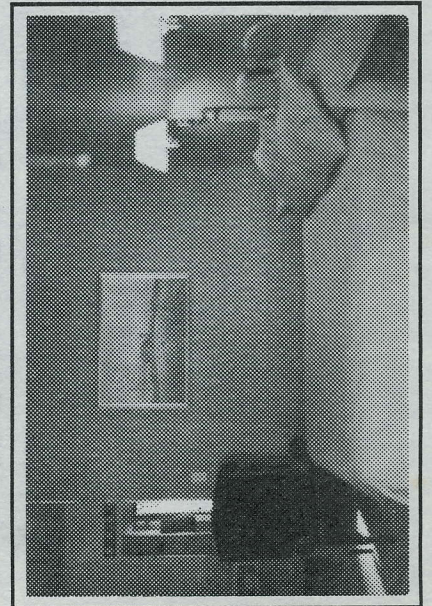
Bob & Patty Stewart, proprietors

805 West First Street
Cle Elum, Washington 98922

509-674-4548

STEWART LODGE

805 West First Street
Cle Elum, Washington 98922
509-674-4548



WELCOME TO
**STEWART
LODGE**

CLE ELUM'S FINEST NEW MOTEL
AAA ◆ ◆ ◆ Rating

You will be delighted with your stay at this very attractive facility. Each room is tastefully decorated in Country Motif.

FEATURING —

- Queen Beds
- Quilted Bedspreads & Pillow Shams
- Large Wingback Chairs
- Unique Pine Furniture
- Large full Bathroom
- Tub & Shower Combination
- Additional Vanity in Dressing Area
- Color Cable TV
- Remote Control Available
- Direct Dial Pushbutton Phone
- 24 Hr. Wakeup Service
- Air Conditioning

**SMOKING & NON-SMOKING
ROOMS**

- Handicap Room
- Baby Crib Available
- Refrigerators Available

Single Queen &
Double Queen Units

THE LODGE FEATURES

- Conference Room with Fireplace
Ideal for the special party or meeting.
Seating for 35
- Complimentary Coffee Bar
- Vending Room (Open 24 Hrs.)
- Guest Laundry
- Ice & Pop Machine

HEATED POOL

(with Bubble for extended use)

- Playground for the Kiddies

OUTDOOR SPA - IN GAZEBO

RESERVATIONS RECOMMENDED

Major Credit Cards Accepted

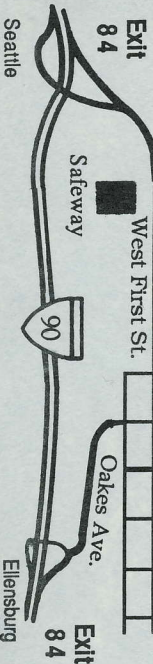
- Commercial & Weekly Rates Available

**A Motel of Quality
with Competitive Prices**

We Are Here

CLE ELUM

Pennsylvania Ave.



ATTRACTIONS

CLE ELUM

- Carpenter Museum
- Cle Elum Telephone Museum
- Cle Elum Bakery (Ovens from 1906)
- Homemade Sausages from the
Specialty Meat Shops
- Shopping from a variety of Gift Shops
 - Pioneer Days
 - July 4th Parade & Street Fair

ROSLYN

- See Filming Site of the
New Hit T.V. Series

'Northern Exposure'

- Historical Coal Mining Town of the Past
- Roslyn Museum (displays of the many aspects
of the coal mining days)
- Roslyn Cemeteries (History Galore...
24 Nationalities buried here)
- Brick Tavern (Oldest consistently operated
Saloon in Kittitas County. Built in 1889...still has
the original flush spicoon).

SPORT ENTHUSIASTS

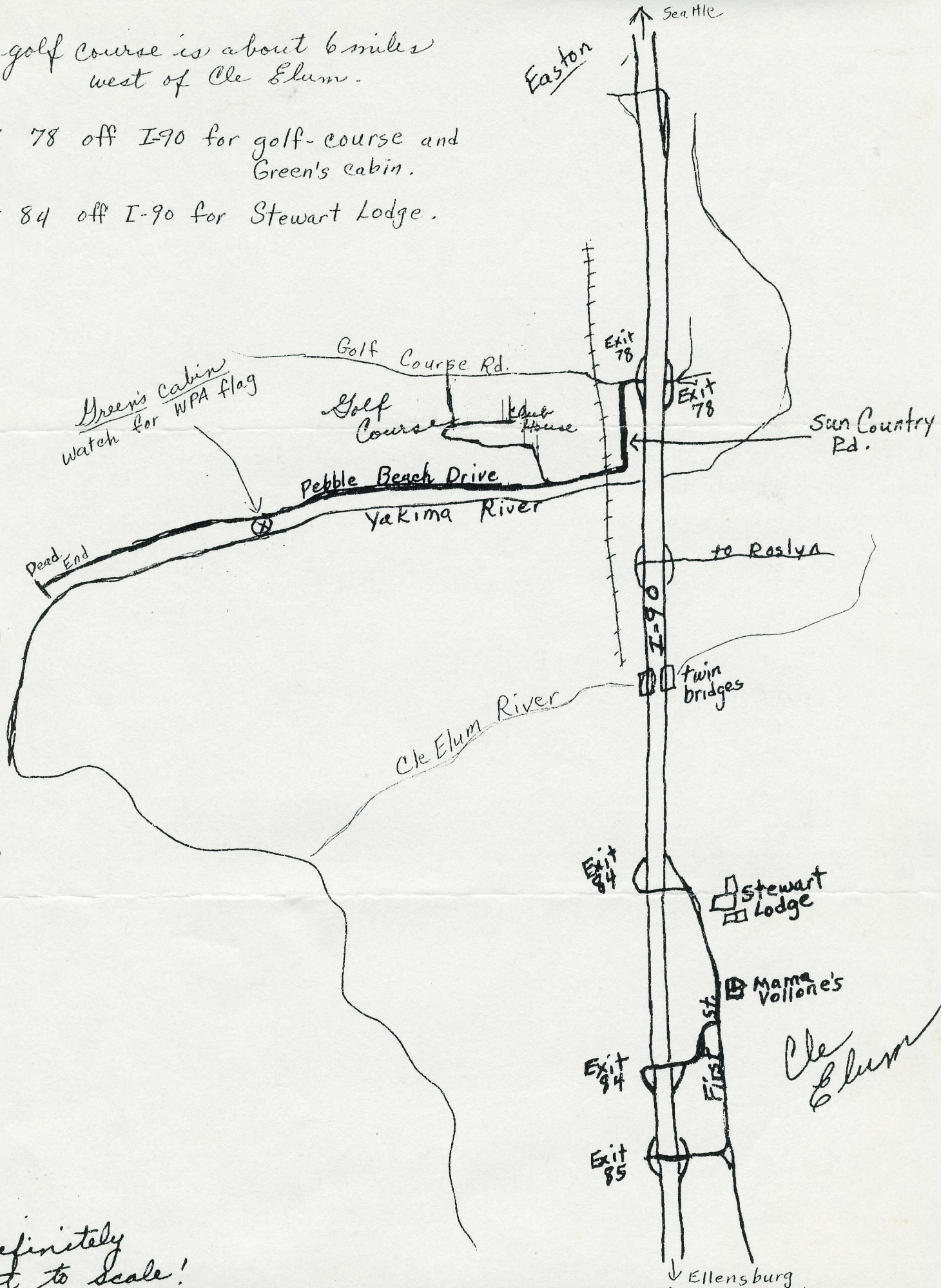
Biking, Boating, Camping, Canoeing, Fishing,
Golfing, Hiking, Horseback Riding, Hunting,
Mushrooming, River Rafting, Rock Hounding,
Skiing, Snowmobiling, Swimming & Wind
Surfing.

Be our guests and enjoy the many
pleasures we have to offer for your
vacation spot all year long.

The golf course is about 6 miles west of Cle Elum.

+ 78 off I-90 for golf-course and Green's cabin.

Exit 84 off I-90 for Stewart Lodge.



Definitely not to scale!